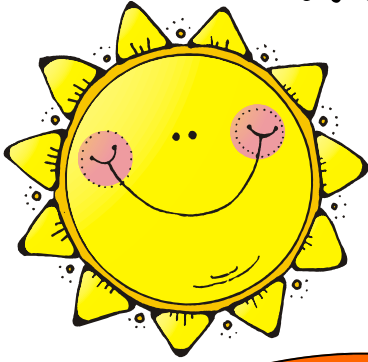


Griffin First Baptist Church
Weekday Education Conference



The Key is Me!

Presenters
include:
DeDe Reilly
Pat Leonard
Judy Short

Thursday
August 5, 2010
8:00 a.m. — 3:30 p.m.

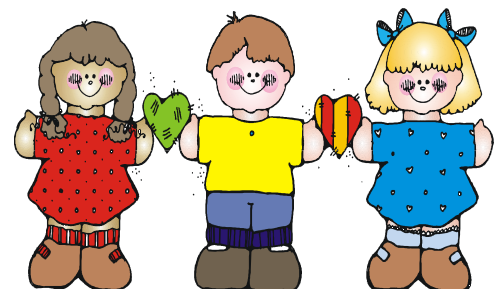
Approved by
Bright From
the Start
for 5
Training Hours

Exhibits
by local
vendors

Mini-Sessions
presented
by
FBC Staff

Fee: \$25 for G.P.A. members
\$30 for non-members
(Price includes lunch.)

For information & registration
Call: (770) 228-7880
Email: dianelamb@fbcgriffin.org
lynnpitts@fbcgriffin.org



GA Preschool / First Baptist Church Weekday Education
Thursday, August 5, 2010

"The Key is ME!"

***This conference is approved by Bright From the Start for 5 training hours. Each participant will need to choose one workshop for each session.

8:00 a.m. — 8:30 a.m.

Sign in

8:30 a.m. — 8:50 a.m.

Welcome (Church Sanctuary)

9:00 a.m. — 11:00 a.m.

Session A

Pat Leonard
De De Reilly
Suzanne Tatum

"Get Going on a Great Year"
"The Bible Throughout Your Day"
"Love and Logic" & "Where Can I
Find Help?"

11:15 a.m. — 12:15 p.m.

Session B

Debby Daniel Bryant
Denel James
Jane Murdock, Angie Michel
& Jan McLean

"Getting Preschoolers on the Right Track"
"Transforming Challenging Behaviors"
"Out of the Box & Into the Circle"

12:15 p.m. — 1:15 p.m.

Lunch (FLB Auditorium)
Vendor Exhibits (FLB Gymnasium)

1:30 p.m. — 3:30 p.m.

Session C

Pat Leonard
DeDe Reilly

Judy Short

"The Scoop on Learning Centers"
"10 Commandments of a Professional
Christian Educator"
"Oodles of Art"

*Proposed Agenda — Final conference agenda will be available in August and will include room numbers.

"The Key is Me!"

August 5, 2010

The theme of this year's conference is "The Key is Me!" The amount of work and effort you put into your classroom often dictates the output from the classroom. As educators, we have the opportunity to plant seeds of learning for now and for the future. This workshop is a great way to expand your activities and themes by sharing ideas from other teachers. You will be encouraged to take ownership of the power you have to be successful. Each participant possesses the key to unlock a treasure chest of creative ideas and wonderful opportunities for our students. The techniques and ideas presented and the relationships formed will ensure better weekday programs in the coming school year.

***This conference is approved by Bright From the Start for 5 training hours. Each participant will need to choose one workshop for each session.



SESSION A



CLASS NUMBER

1 Pat Leonard — *Get Going on a Great Year*

Have a fantastic fall! Many new ideas will be offered to ease the mind of the new teacher and put a new spark in the returning teacher. A variety of stories, songs, games and activities will be presented. ECE 3,4,5 (2 hours)

2 DeDe Reilly — *The Bible Throughout Your Day*

What do I do when I don't have a Bible curriculum, but I teach in a Christian Preschool? Discover the basics of making Jesus the lead teacher in your weekday preschool classroom. From snack to recess and lesson plans to school-to-home communication, you can inspire your preschoolers to love the God who made them, and Jesus who loves them. ECE 3 (2 hours)

3 Suzanne Tatum — *Love and Logic & Where Can I Find Help?*

Is discipline taking up too much of your class time? "Love and Logic" offers techniques that will allow you to spend less time on discipline and more time teaching. This method puts parents and teachers back in control and teaches children to be responsible. And, if you identify a child with a special needs problem, discover where to find help in Georgia. ECE 1,4,5,6 (2 hours)



SESSION B



CLASS
NUMBER

- 4 Debby Daniel Bryant — *Getting Preschoolers on the Right Track*
Children learn by exploring the world around them. However, some have more difficulty with communication, understanding and learning, sensory and physical development, behavior or relating to other people. Receive advice on building good relationships with parents and practical strategies to identify and meet an individual child's additional needs in relation to their learning. ECE 1,4,5,6 (1 hour)
- 5 Denel James — *Transforming Challenging Behavior*
Learn strategies and techniques to reduce challenging behaviors and enhance the social and emotional well-being of children. ECE4,5 (1 hour)
- 6 Jane Murdock, Angie Michel & Jan McLean — *Out of the Box & Into the Circle*
Are you looking for new and unique ways to intrigue your students? Join us as we "Think Outside of the Box" while we "Add a Little Drama to the Classroom" and tie it all together in our "Creative Circle Time". ECE 3 (1 hour)



SESSION C



CLASS
NUMBER

- 7 Pat Leonard — *The Scoop on Learning Centers*
Collect ideas for dozens of child friendly centers. Reinforce basic skills with centers for math, science, alphabet and language. See designs for unit related centers, and activities to be used as follow up to books and stories. All centers have been "kid tested", are age appropriate for the preschool child, and are easy to make and implement. ECE 3 (2 hours)



SESSION C



CLASS
NUMBER

8 DeDe Reilly — 10 Commandments of a Professional Christian Educator

"Educators should be chosen not merely for their special qualifications, but more for their personality and character, because we teach more by what we are than by what we teach." Let's address what that looks like with sincerity and a good bit of humor.

ECE 5,6,7 (2 hours)

9 Judy Short — Oodles of Art

This creative & fun Art Workshop introduces "oodles" of creative new art materials, including BioColor, Foam Paint, Air Dry Putty, Liquid Watercolor and other unique paints & collage materials. Includes a group discussion on "How the Arts Help Children Grow," an instructor demo of exciting new art materials and time for you to experiment on your own. Whether you're an Art Specialist or "artistically challenged", you'll have fun, get inspired, and take home lots of new ideas.

ECE 3 (2 hours)

GA Preschool Association / First Baptist Church Weekday Education

"The Key is Me!"

INDIVIDUAL REGISTRATION

Registration Deadline: July 30, 2010

Workshop Cost: \$25 for GA Preschool Association members
\$30 for non-members
**Lunch is included in the price.

Please make checks payable to: FBC Weekday

Participant Name: _____

GA Preschool Association Member _____ Yes _____ No

Home Address: _____

Phone: _____

School: _____

Director's Name: _____

School Address: _____

School Phone Number: _____

Email Address: _____

Each participant will need to choose a workshop for each session. We will be unable to make changes on the day of the workshop due to space constraints. Please list your selections below according to the class number. **This conference has been approved by Bright From the Start for 5 training hours.**

	SESSION A	SESSION B	SESSION C
CLASS NUMBER			

Total amount enclosed \$_____

GA Preschool Association / First Baptist Church Weekday Education

"The Key is Me!"

GROUP REGISTRATION

Registration Deadline: July 30, 2010

Workshop Cost: \$25 for GA Preschool Association members
 \$30 for non-members
 **Lunch is included in the price.

Please make checks payable to: FBC Weekday

School: _____

Director's Name: _____

School Address: _____

School Phone Number: _____

Email Address: _____

Each participant will need to choose a workshop for each time slot. We will be unable to make changes on the day of the workshop due to space constraints. Please list each teacher's selections below according to the class number. If additional space is needed, please copy this form and attach. **This conference has been approved by Bright From the Start for 5 training hours.**

Teacher's Name	GA Preschool Member?	Class Numbers		
		SESSION A	SESSION B	SESSION C
	YES / NO			
	YES / NO			
	YES / NO			
	YES / NO			
	YES / NO			
	YES / NO			
	YES / NO			
	YES / NO			
	YES / NO			
	YES / NO			

Total number of participants: _____

Total amount enclosed \$_____

Directions to: First Baptist Church
106 West Taylor St.
Griffin, GA 30223

Please carpool! Parking is limited. There are FBC Griffin parking lots located around the block where the church is located — FBC Griffin signs will be posted in these areas.

From I-85:

Take SR 16 East towards Griffin. Continue approximately 35 miles until it intersects with SR 155 (Hill Street) in Griffin. First Baptist Church is on the right.

From I-75

Take Exit 205 (SR 16). Go west on SR 16 until it intersects with SR 155 (Hill Street) in Griffin (approximately 11 miles). First Baptist Church is on the left.

From North:

Take US 19/41 (Tara Blvd.) South (approximately 23 miles) towards Griffin. Pass through intersection with SR 92 at Walmart shopping center. Continue South to US 19/41 Business Exit towards Griffin. Take US 19/41 Business to intersection with SR 16 (Taylor Street). Turn left onto SR 16 (Taylor Street). Continue on SR 16 until it intersects with SR 155 (Hill Street) in Griffin. First Baptist Church is on the right.

From South:

Go North on US 341. Merge onto US 41 North. Go approximately 12 miles and turn right onto SR 155 (Zebulon Rd.). Continue approximately 4 miles. First Baptist Church is on the left.